

ITEM	QTY	DESCRIPTION
1	1	E-CLIP
2	1	WASHER
3	1	PACKING
4	1	FLOAT VALVE 2.5
5	1	SPRING
6	1	WASHER
7	1	SCREW, THROTTLE STOP
8	1	GASKET, BOWL
9	1	SPRING
10	1	SCREW, AIR
11	2	CAP
12	1	O-RING
13	4	SCREW, BOWL

MK-VM34-8441

POLARIS APPLICATIONS:

1997-2002 Scrambler 400

1994-1999 Sport 400L

1995-2001 Xplorer 400L

1996 Xpress 300

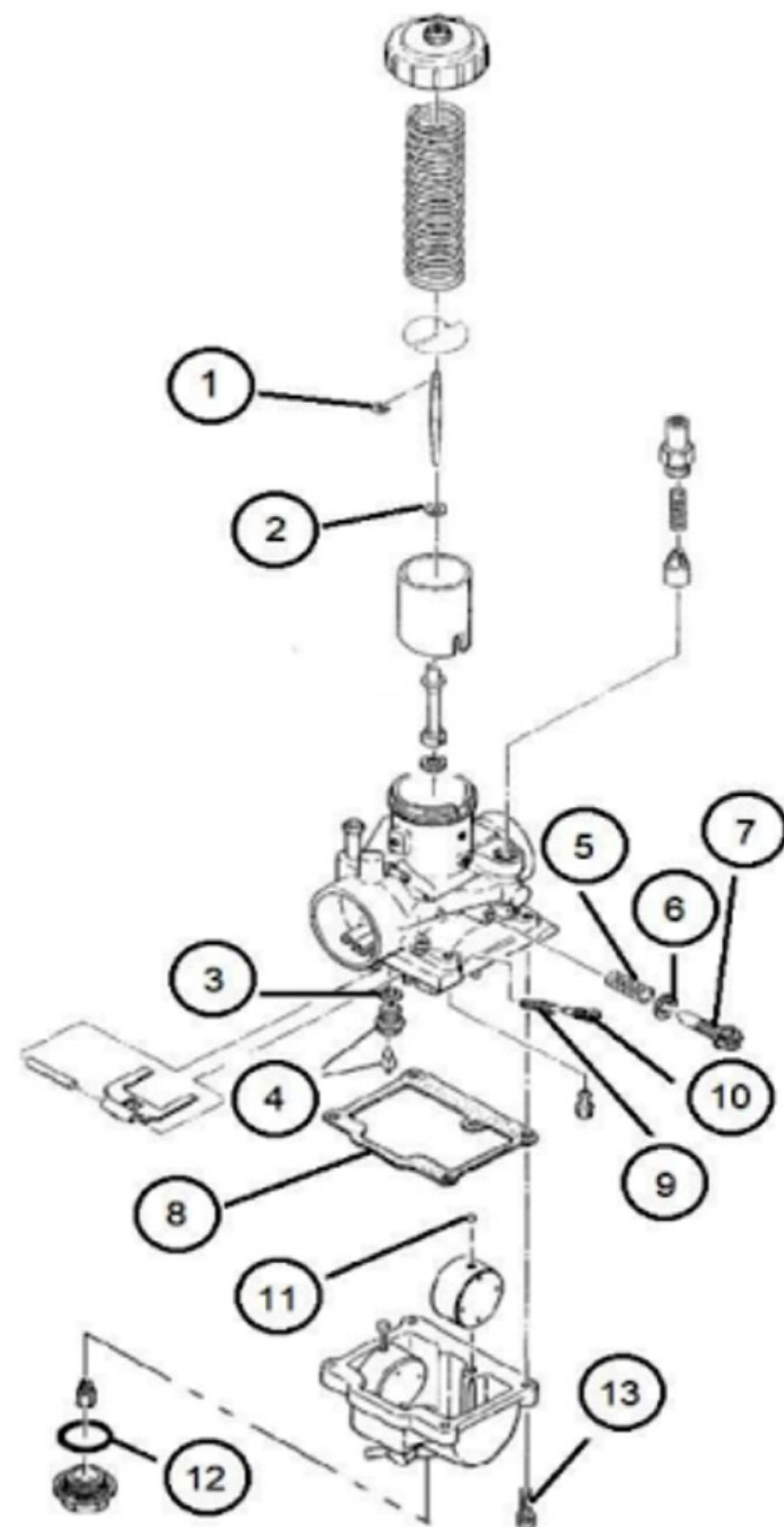
1996-1998 Xpress 400L

1994-1997 Sportsman 400L

1993 350L 2X4, 4X4, 6X6

1990-1992 Trail Boss 350L

1997 Big Boss 400L 6X6



****REPLACEMENT JET NOTE**

Due to varying model requirements, this kit does not include main jets or pilot jets. If needed, refer to the following Mikuni Part numbers when acquiring these jets:

Main Jet: 4/042-XXXX

Pilot Jet: VM22/210-XXXX