

ITEM	QTY	DESCRIPTION
1	2	SCREWS, TOP CAP
2	1	GASKET, TOP CAP
3	1	HOLDER
4	1	RING
5	1	E-CLIP
6	3	CLIP, VENT LINE
7	7	VENT LINE
8	1	NUT, IDLE JAM (YZ)
9	1	SCREW, IDLE (YZ)
10	1	FILTER
11	1	SPRING IDLE (KTM)
12	1	ADJUSTER, IDLE (KTM)
13	1	SCREW, FLOAT PIN
14	1	SCREW, FLOAT VALVE
15	1	SPRING, AIR SCREW
16	1	AIR SCREW
17	1	FLOAT VALVE
18	1	HOLDER
19	1	GASKET, BOWL
20	2	PLATE, VENT HOSE
21	3	SCREWS, BOWL
22	1	O-RING

MK-TMX38-48

2-Stroke Applications:

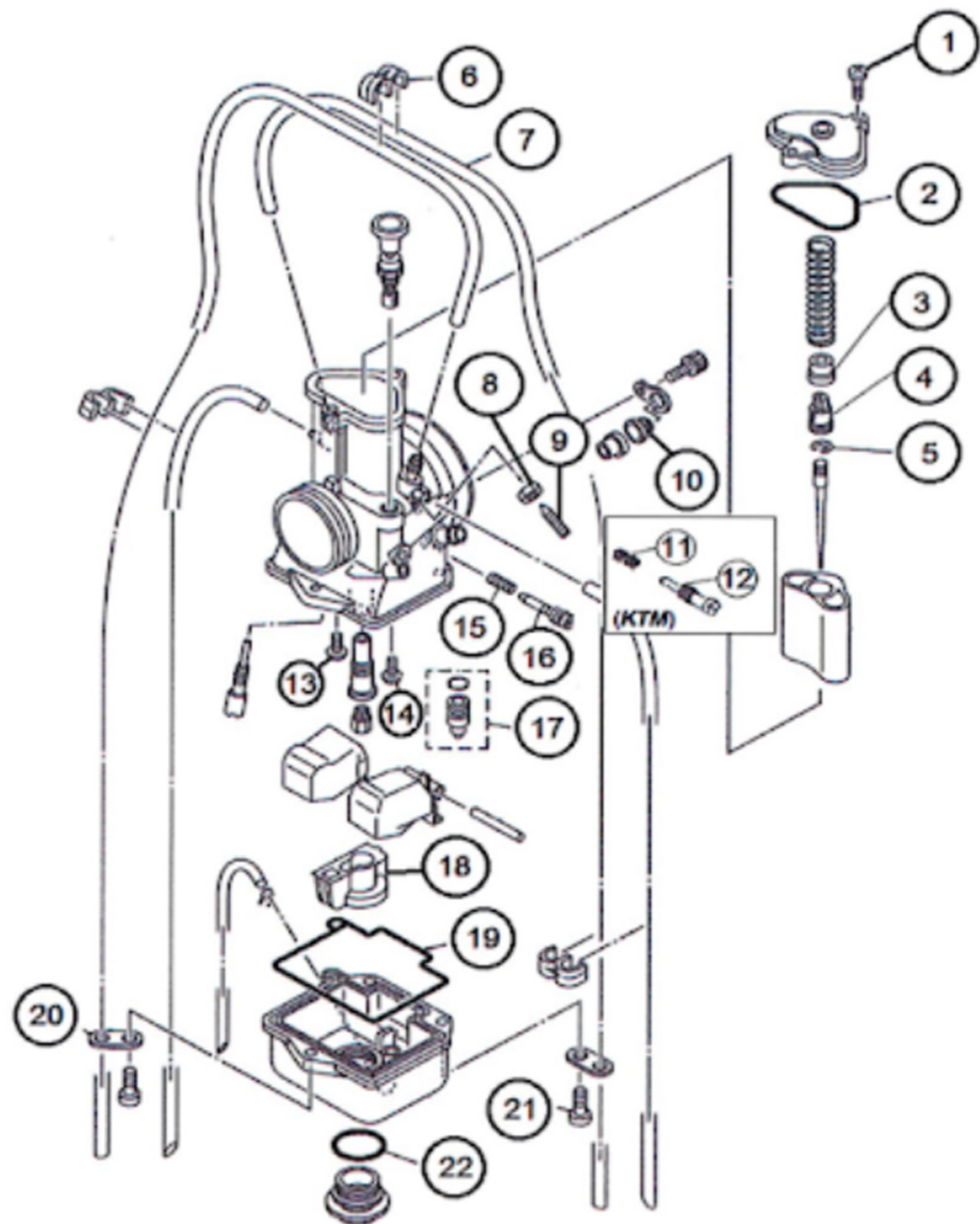
2005-2017 Yamaha YZ 125

2017-2018 KTM 125, 150, 250,300

2017-2018 Husqvarna 125, 150, 250,300

2001-2006 Suzuki RM 125

2003-2005 Kawasaki KX 125



****NOTE: REPLACEMENT JET**

Due to varying model requirements, this kit does not include main or pilot jets.

If needed, refer to the following Mikuni Part numbers when acquiring these jets:

Main Jet : 4/042-XXXX

Pilot Jet: N224103-XXXX

****NOTE: IDLE SCREW**

Some YZ Yamaha, RM Suzuki and KX Kawasaki Models will use a fixed idle screw with nut Reference # 8 & 9

Some KTM Models will use an adjustable idle screw with spring. Reference # 11 & 12