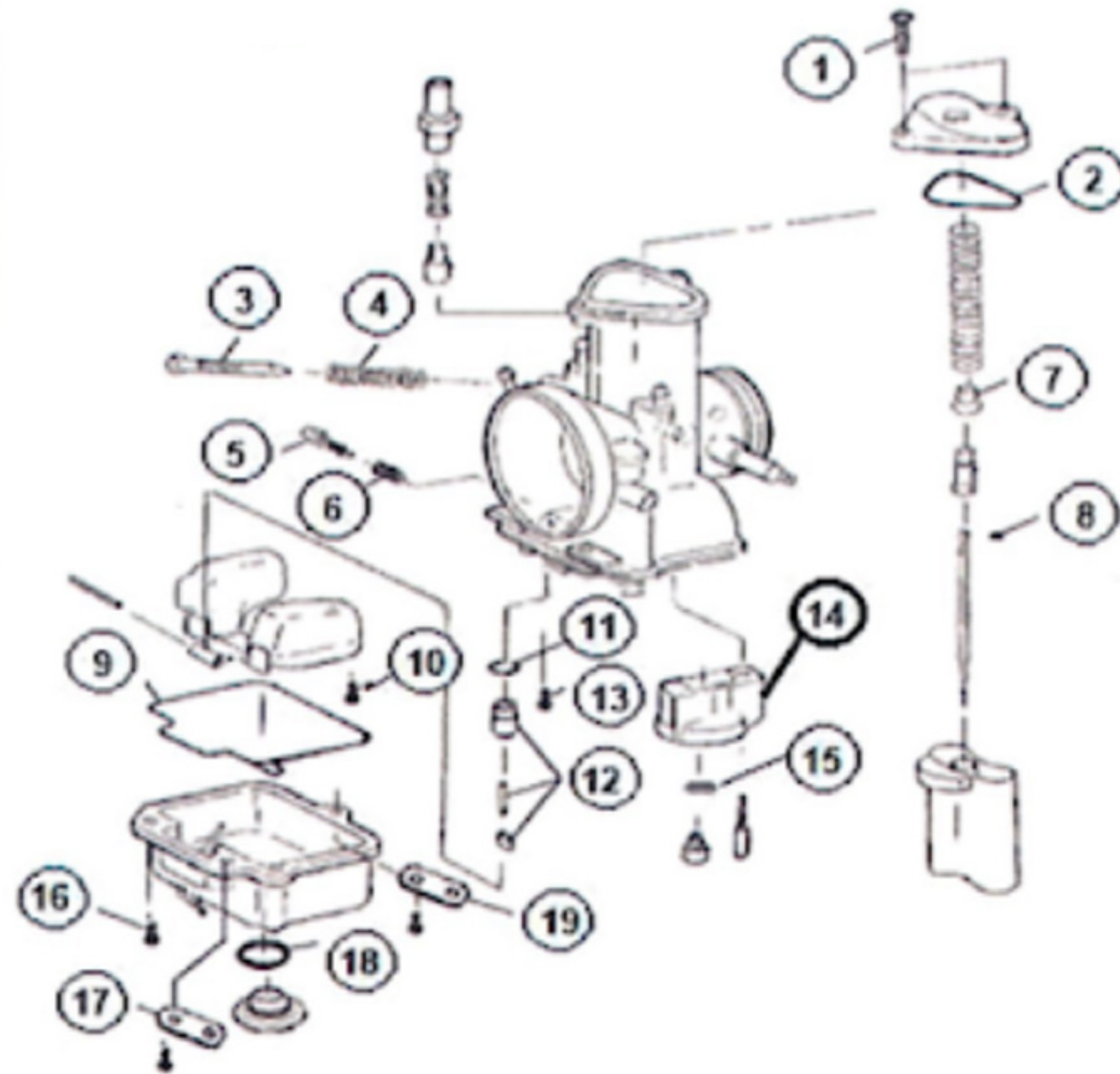


| ITEM | QTY | DESCRIPTION             |
|------|-----|-------------------------|
| 1    | 2   | SCREWS, TOP CAP         |
| 2    | 1   | GASKET, TOP CAP         |
| 3    | 1   | ADJUSTER, IDLE          |
| 4    | 1   | SPRING, IDLE            |
| 5    | 1   | ADJUSTER, AIR           |
| 6    | 1   | SPRING, AIR             |
| 7    | 1   | GUIDE, HOLDER           |
| 8    | 1   | E-RING                  |
| 9    | 1   | GASKET, BOWL            |
| 10   | 1   | SCREW, FLOAT PIN        |
| 11   | 1   | O-RING, FUEL VALVE      |
| 12   | 1   | FLOAT VALVE             |
| 13   | 1   | SCREW                   |
| 14   | 1   | HOLDER GUIDE            |
| 15   | 1   | WASHER, MAIN JET        |
| 16   | 3   | SCREW, BOWL             |
| 17   | 1   | KEEPER PLATE, VENT LINE |
| 18   | 1   | O-RING, FLOAT BOWL      |
| 19   | 1   | KEEPER PLATE, VENT LINE |

**MK-TMX34-3SM**

**MIKUNI TMX34 SNOWMOBILE CARBURETOR**



**\*\*NOTE: REPLACEMENT JET**

Due to varying model requirements, this kit does not include main or pilot jets.

If needed, refer to the following Mikuni Part numbers when acquiring these jets:

Main Jet : 4/042-XXXX

Pilot Jet: N224103-XXXX

**ARTIC CAT SNOWMOBILES:**

1998-2000 ZR440

2001-2006 AC ZR SNOWPRO 440

**BOMBARDIER SKI-DOO SNOWMOBILES:**

1999 MXZX440LC

2000-2007 MXZX 440

1999 MXZ600

2008-2013 MXZ600

2014-2015 MXZX 600, MXZ 600RS

**POLARIS SKI-DOO SNOWMOBILES:**

1999 XCR SP440

2000 XC 440 SP

2001-2003 PRO X 440

2004-2005 PRO XR 440

2006-2007 IQ 440