

ITEM	QTY	DESCRIPTION
1	1	CAP, RUBBER
2	1	ADJUSTER, CABLE
3	1	LOCK NUT, ADJUSTER
4	1	RING, RETAINING
5	2	SCREW, TOP COVER
6	1	ADJUSTER, IDLE STOP
7	1	SPRING, IDLE ADJUST
8	1	O-RING, TOP COVER
9	1	SCREW, AIR ADJUSTER
10	1	SPRING, AIR SCREW
11	1	E-RING, NEEDLE CLIP
12	2	VENT HOSE
13	1	VALVE SEAT ASSY (3.5)
14	2	CAP, FLOAT RETAINER
15	1	GASKET FLOAT BOWL
16	1	SCREW, FLOAT BOWL
17	1	O-RING, DRAIN PLUG
18	1	HOSE, DRAIN

MK-TM35-38

MIKUNI: TM35-1, TM38-18, TM38-27

Suzuki: 1986-1988 RM125

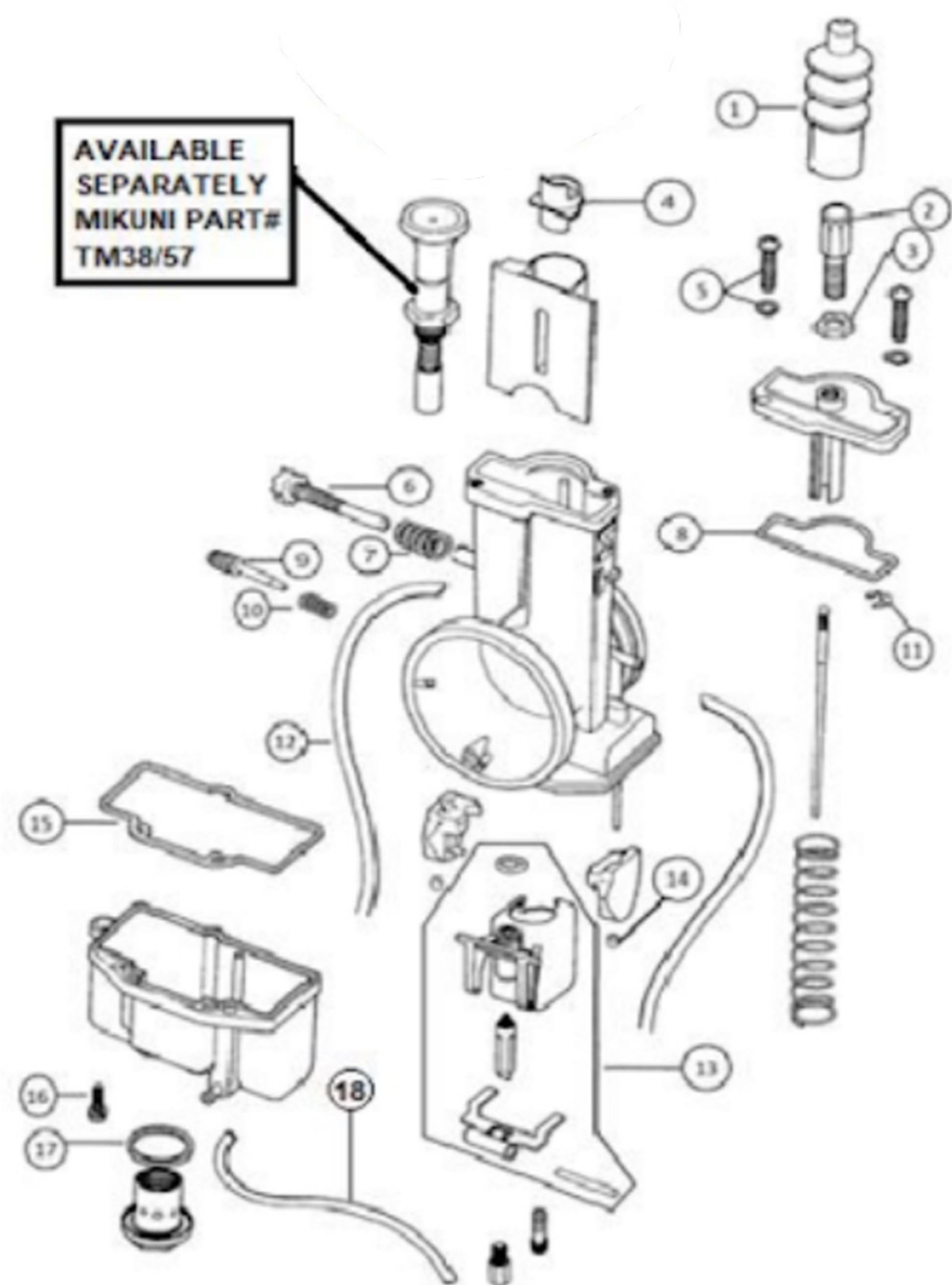
Suzuki: 1988-1992 RM250

Suzuki: 1989-1996 RMX250

Husqvarna:

1992-2002 CR, WXC, WXE, WR - 125, 250, 360

2-stroke models using this style Mikuni TM35, TM38



Due to varying model requirements, this kit does not include main or pilot jets.

If needed, refer to the following Mikuni Part numbers when acquiring these jets:

Main Jet : 4/042-XXXX

Pilot Jet: VM22/210-XXXX

1998 VMAX 700 XTCP, XTC, SXS

2000 V MAX 700 DELUXE

1999-2003 VMAX 600