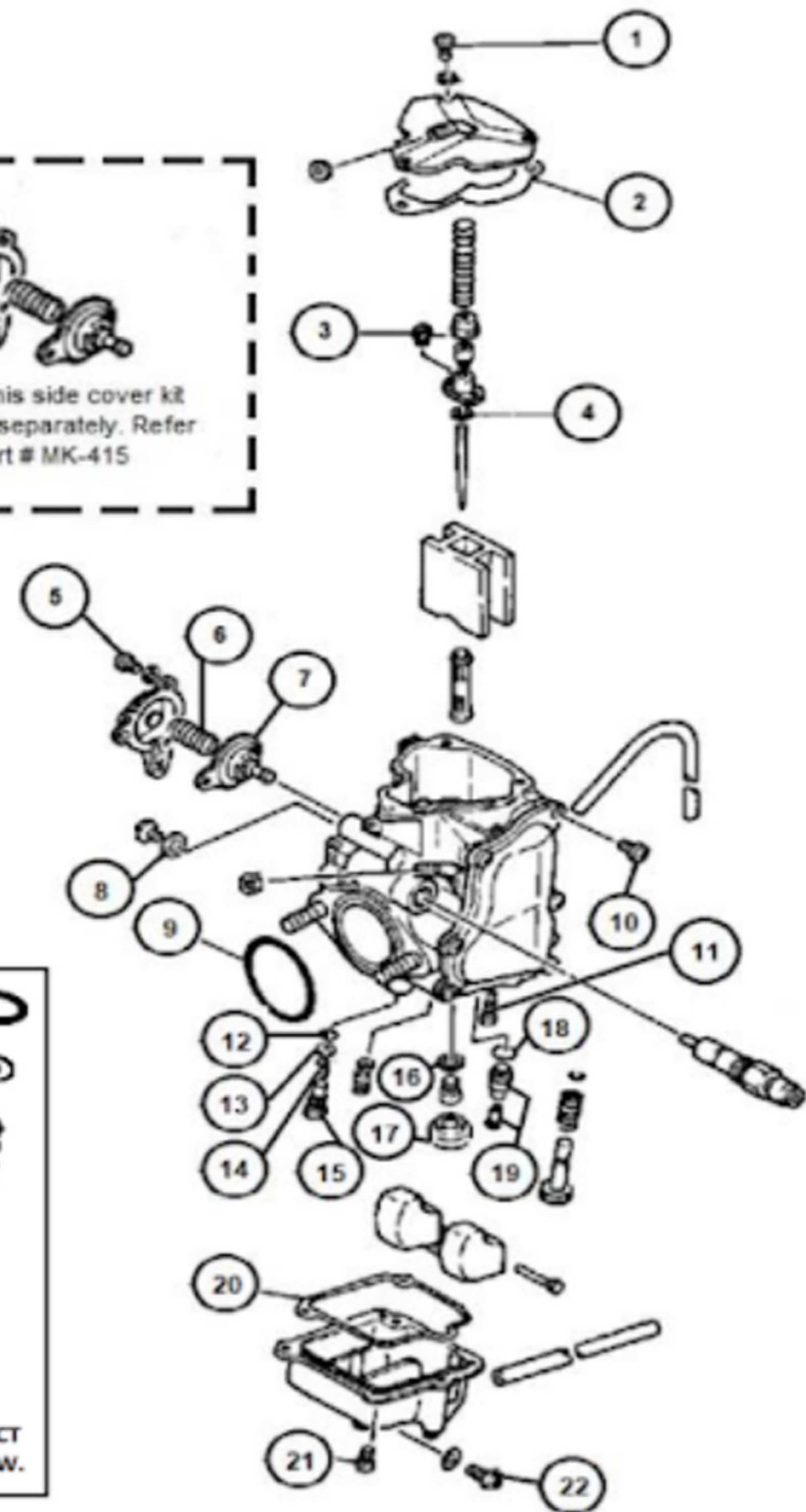


ITEM	QTY	DESCRIPTION
1	3	SCREW, TOP CAP
2	1	GASKET, TOP CAP
3	2	SCREW
4	1	E-CLIP
5	3	SCREW
6	1	SPRING
7	1	DIAPHRAGM
8	1	GASKET
9	1	O-RING
10	6	SCREW, SIDE CVR
11	1	SCREW, FLOAT VALVE
12	1	O-RING
13	1	WASHER
14	1	SPRING
15	1	FUEL SCREW
16	1	WASHER
17	1	BAFFLE PLATE
18	1	O-RING
19	1	FLOAT VALVE 2.5
20	1	GASKET, BOWL
21	4	SCREW, BOWL
22	1	SCREW DRAIN

## MK-BTM32-16 Rebuild Kit

1993-1995 Yamaha Kodiak 400  
 1987-1995 Yamaha Moto 4 350  
 1987-1998 Yamaha Big Bear 350  
 1987-2004 Yamaha Warrior 350  
 1995 Yamaha Wolverine 350



### \*\*REPLACEMENT JET NOTE

Due to varying model requirements, this kit does not include main jets or pilot jets. If needed, refer to the following Mikuni Part numbers when acquiring these jets:

Main Jet: N100604-XXXX

Pilot Jet: N151067-XXXX

