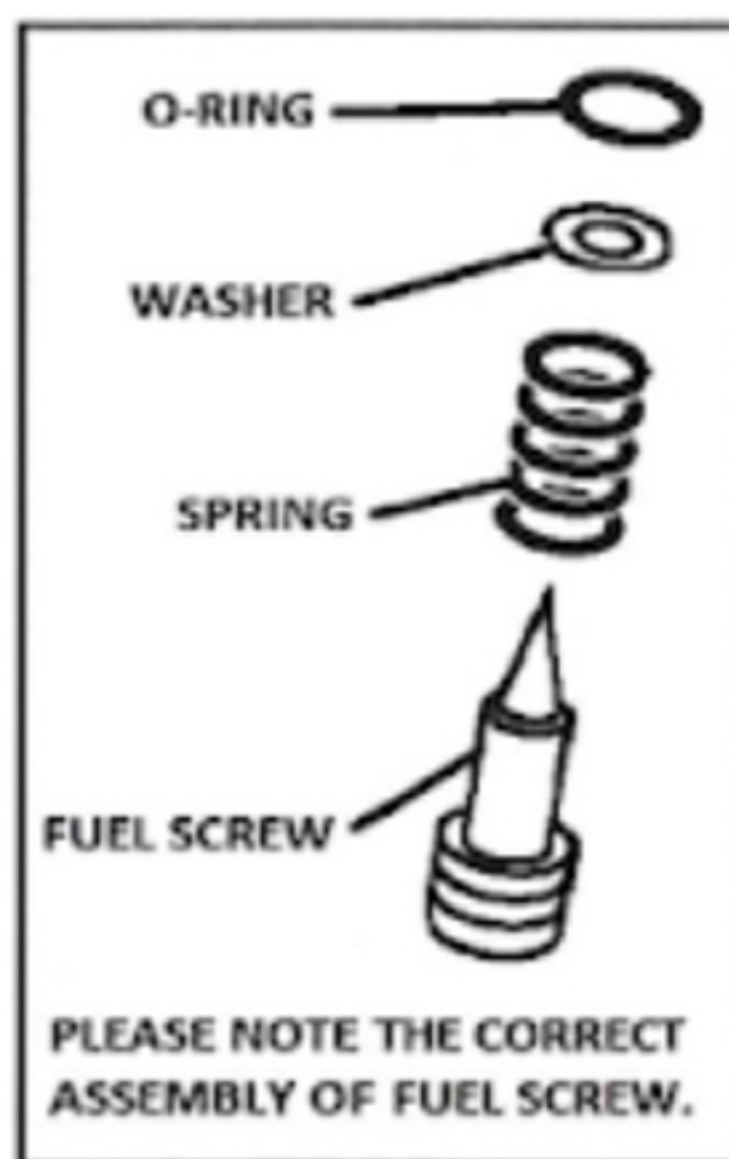
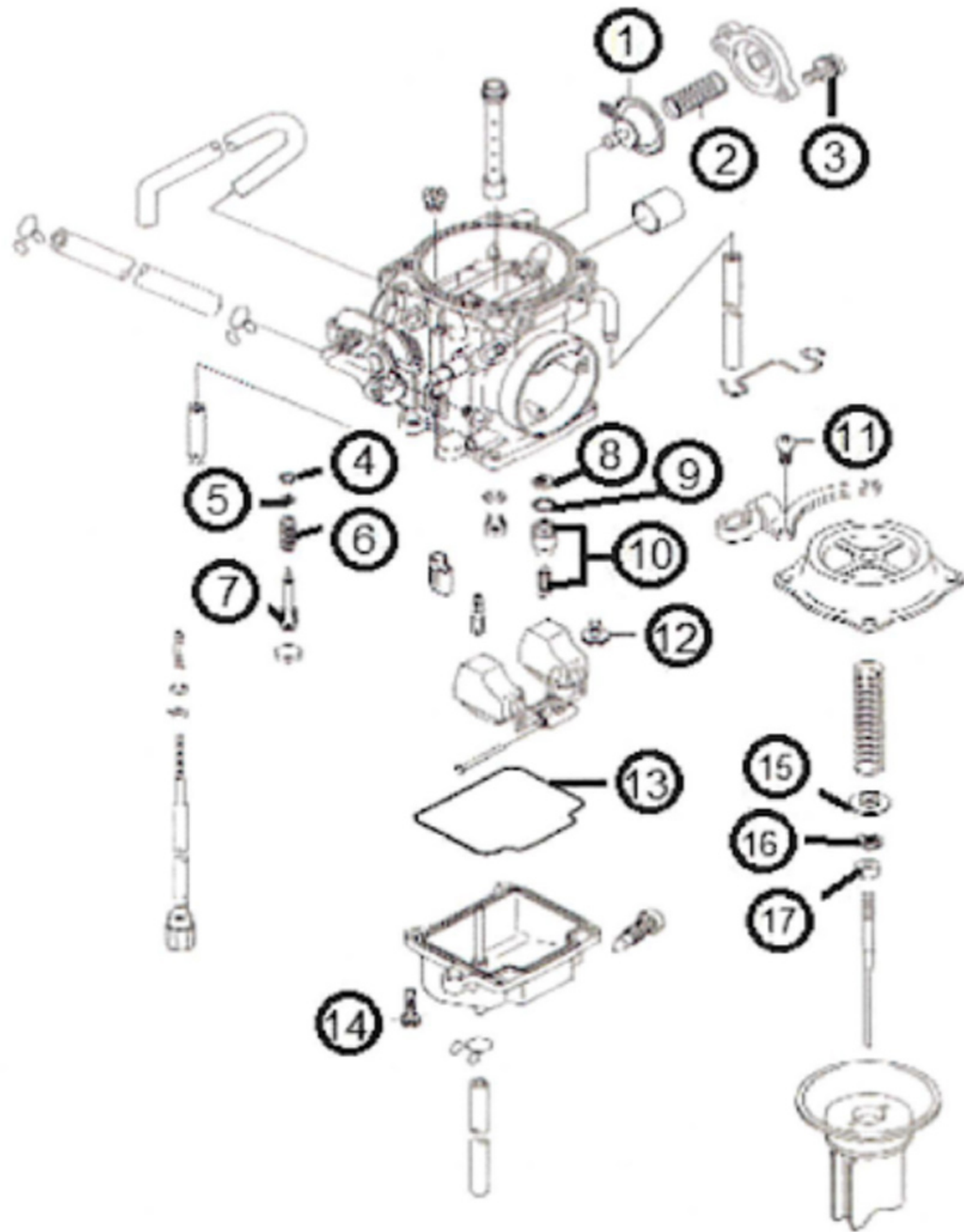


ITEM	QTY	DESCRIPTION
1	1	DIAPHRAGM
2	1	SPRING
3	2	SCREWS
4	1	O-RING
5	1	WASHER
6	1	SPRING
7	1	FUEL SCREW
8	1	FILTER
9	1	O-RING
10	1	FLOAT VALVE 2.0
11	4	SCREW, TOP CAP
12	1	SCREW
13	1	BOWL GASKET
14	4	SCREW, BOWL
15	1	RING
16	1	E-RING
17	1	RING

MK-BST34-236

KAWASAKI APPLICATIONS:
2000-2004 KL250 SUPER SHERPA



****REPLACEMENT JET NOTE**

Due to varying model requirements, this kit does not include main or pilot jets

If needed, refer to the

following Mikuni Part numbers when acquiring these jets:

Main Jet: N100604-XXXX

Pilot Jet: VM22/210-XXXX