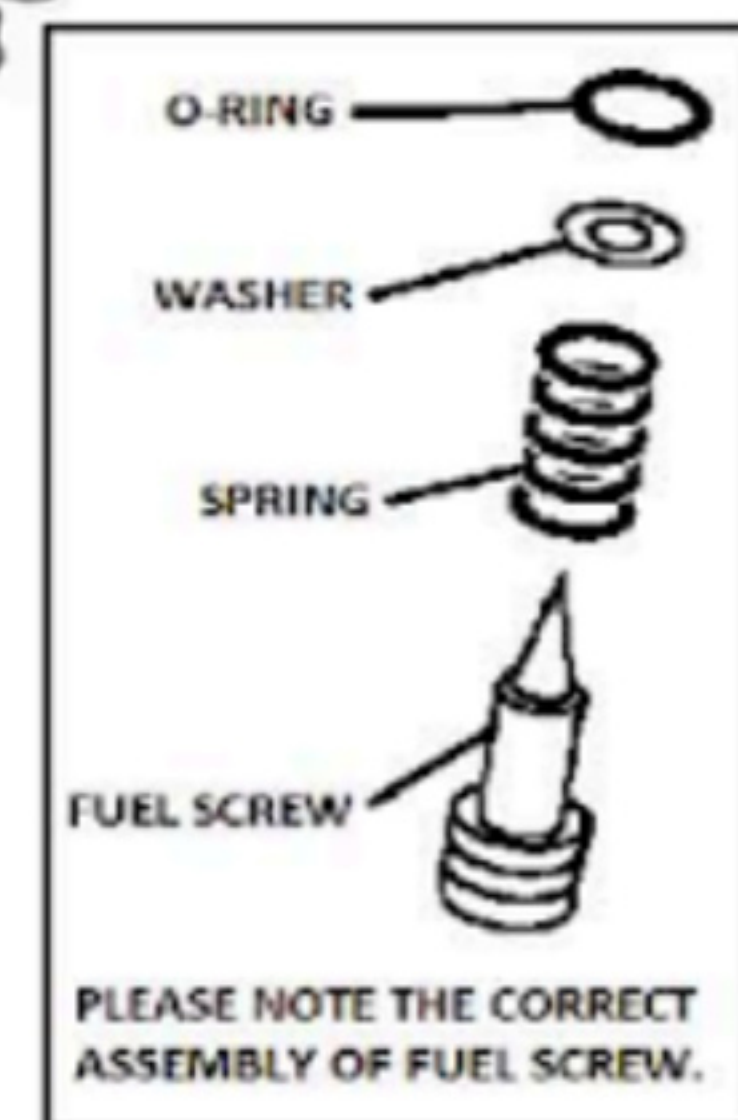
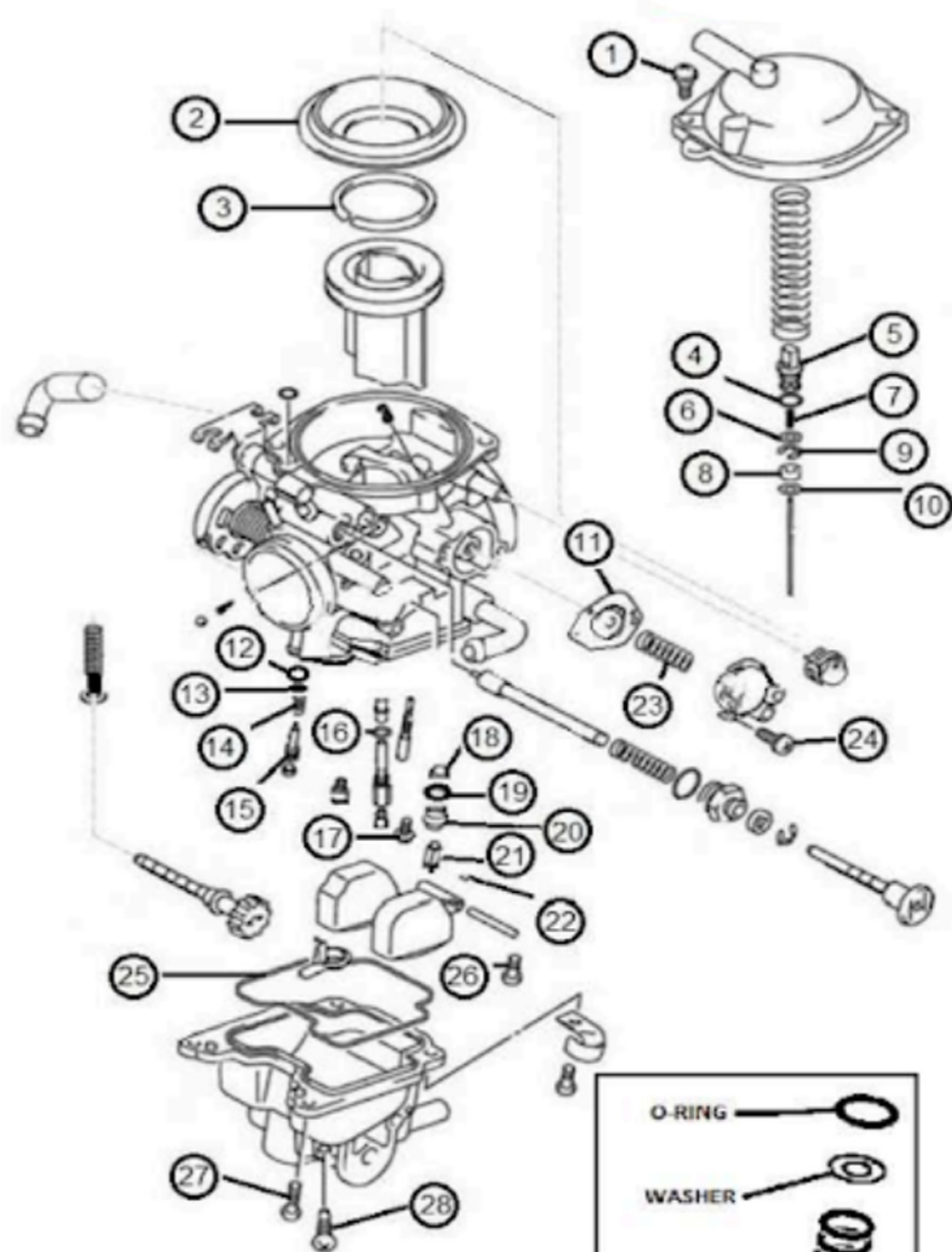


| ITEM | QTY | DESCRIPTION |
|------|-----|----------------------|
| 1 | 2 | TOP CAP SCREW |
| 2 | 1 | DIAPHRAGM |
| 3 | 1 | HOLDER |
| 4 | 1 | O-RING |
| 5 | 1 | HOLDER |
| 6 | 1 | WASHER |
| 7 | 1 | SPRING |
| 8 | 1 | RING |
| 9 | 1 | E-CLIP |
| 10 | 1 | WASHER |
| 11 | 1 | DIAPHRAGM |
| 12 | 1 | O-RING |
| 13 | 1 | WASHER |
| 14 | 1 | SPRING |
| 15 | 1 | FUEL SCREW |
| 16 | 1 | O-RING |
| 17 | 1 | SCREW |
| 18 | 1 | FILTER |
| 19 | 1 | O-RING |
| 20 | 1 | FLOAT VALVE SEAT 1.5 |
| 21 | 1 | NEEDLE |
| 22 | 1 | SPRING |
| 23 | 2 | SCREW |
| 24 | 1 | O-RING |
| 25 | 1 | BOWL GASKET |
| 26 | 1 | SCREW |
| 27 | 4 | SCREW |
| 28 | 1 | SCREW, BOWL |

MK-BSR33-79

Applications:
2017-2022 BETA TRIAL EVO 300 4T



****REPLACEMENT JET NOTE**

Due to varying model requirements, this kit does not include main jets or pilot jets

If needed, refer to the following Mikuni Part numbers when acquiring these jets:

Main Jet: N102221-XXXX

Pilot Jet: N224103-XXXX