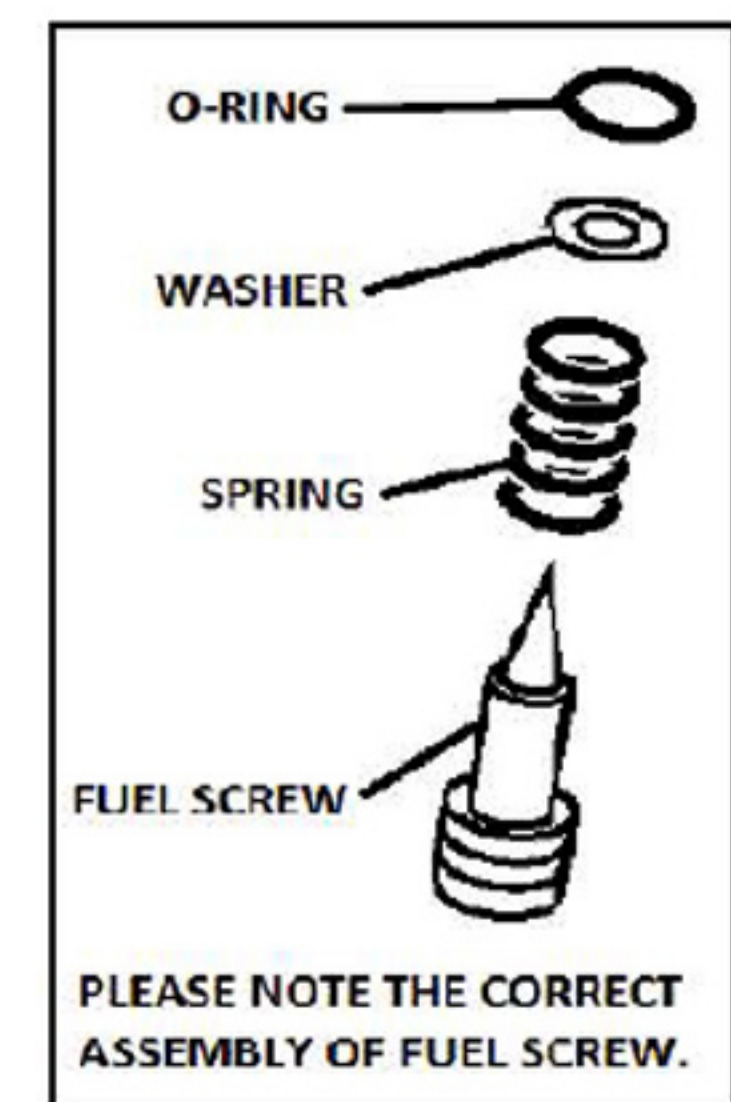
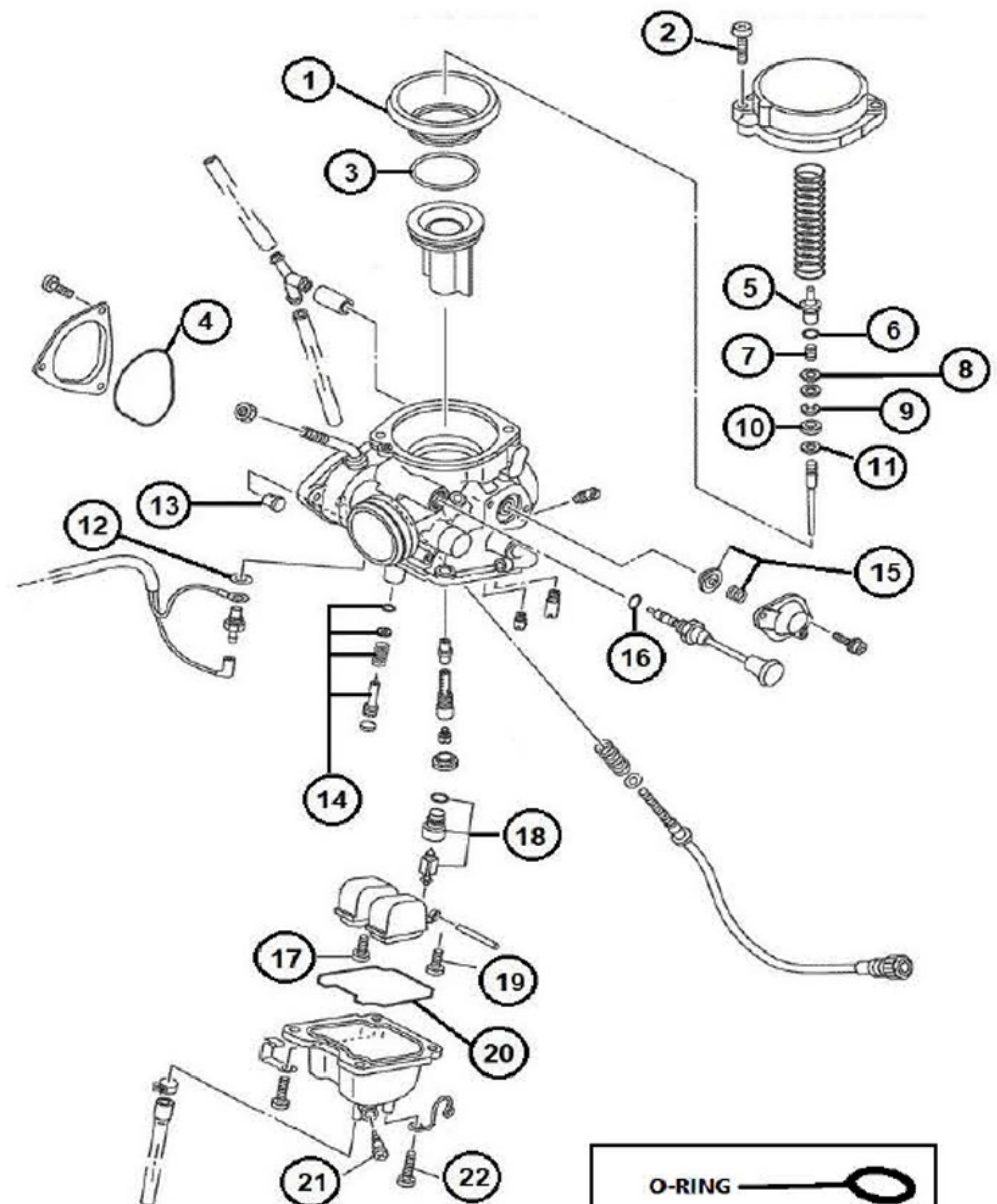


ITEM	QTY	DESCRIPTION
1	1	DIAPHRAGM
2	2	SCREW
3	1	RING
4	1	O-RING
5	1	HOLDER
6	1	O-RING
7	1	SPRING
8	1	WASHER
9	1	CLIP
10	1	RING
11	1	WASHER
12	1	WASHER
13	1	GUIDE CABLE
14	1	FUEL SCREW ASSEMBLY
15	1	DIAPHRAGM ASSEMBLY
16	1	O-RING, CHOKE
17	1	SCREW
18	1	FLOAT ASSEMBLY 2.0
19	1	SCREW
20	1	O-RING, BOWL
21	1	SCREW, DRAIN
22	4	SCREW, BOWL

MK-BSR29-41

Yamaha Applications:
2008-2013 Raptor 250 ATV
2011-2013 Raptor 125 ATV



****REPLACEMENT JET NOTE**

Due to varying model requirements, this kit does not include main jets or pilot jets. If needed, refer to the following Mikuni Part numbers when acquiring these jets:

Main Jet: N100604-XXXX

Pilot Jet: N224103-XXXX