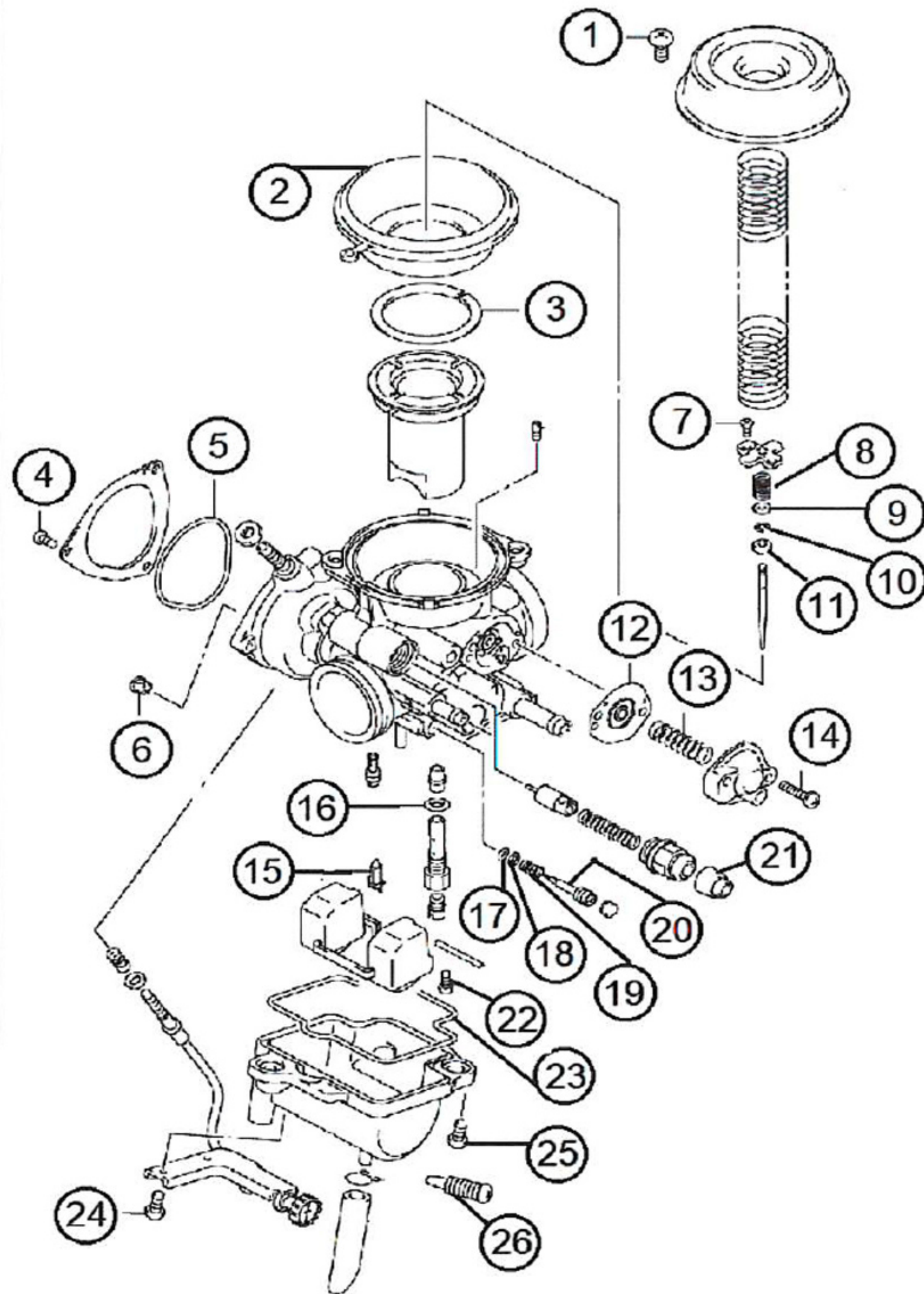


ITEM	QTY	DESCRIPTION
1	2	SCREW, TOP CAP
2	1	DIAPHRAGM
3	1	RING
4	3	SCREW,COVER
5	1	O-RING
6	1	CABLE GUIDE
7	2	SCREW
8	1	SPRING
9	1	WASHER
10	1	E-CLIP
11	1	RING
12	1	DIAPHRAGM
13	1	SPRING
14	2	SCREW
15	1	NEEDLE VALVE 1.8
16	1	O-RING
17	1	O-RING
18	1	WASHER
19	1	SPRING
20	1	FUEL SCREW
21	1	CAP
22	1	SCREW
23	1	ORING, BOWL
24	2	SCREW
25	2	SCREW BOWL
26	1	DRAIN SCREW

MK-BS29-20
2002-2009 SUZUKI OZARK 250 ATV



****REPLACEMENT JET NOTE**

Due to varying model requirements, this kit does not include main or pilot jets

If needed, refer to the

following Mikuni Part numbers when acquiring these jets:

Main Jet: N102221-XXXX

Pilot Jet: VM22/210-XXXX