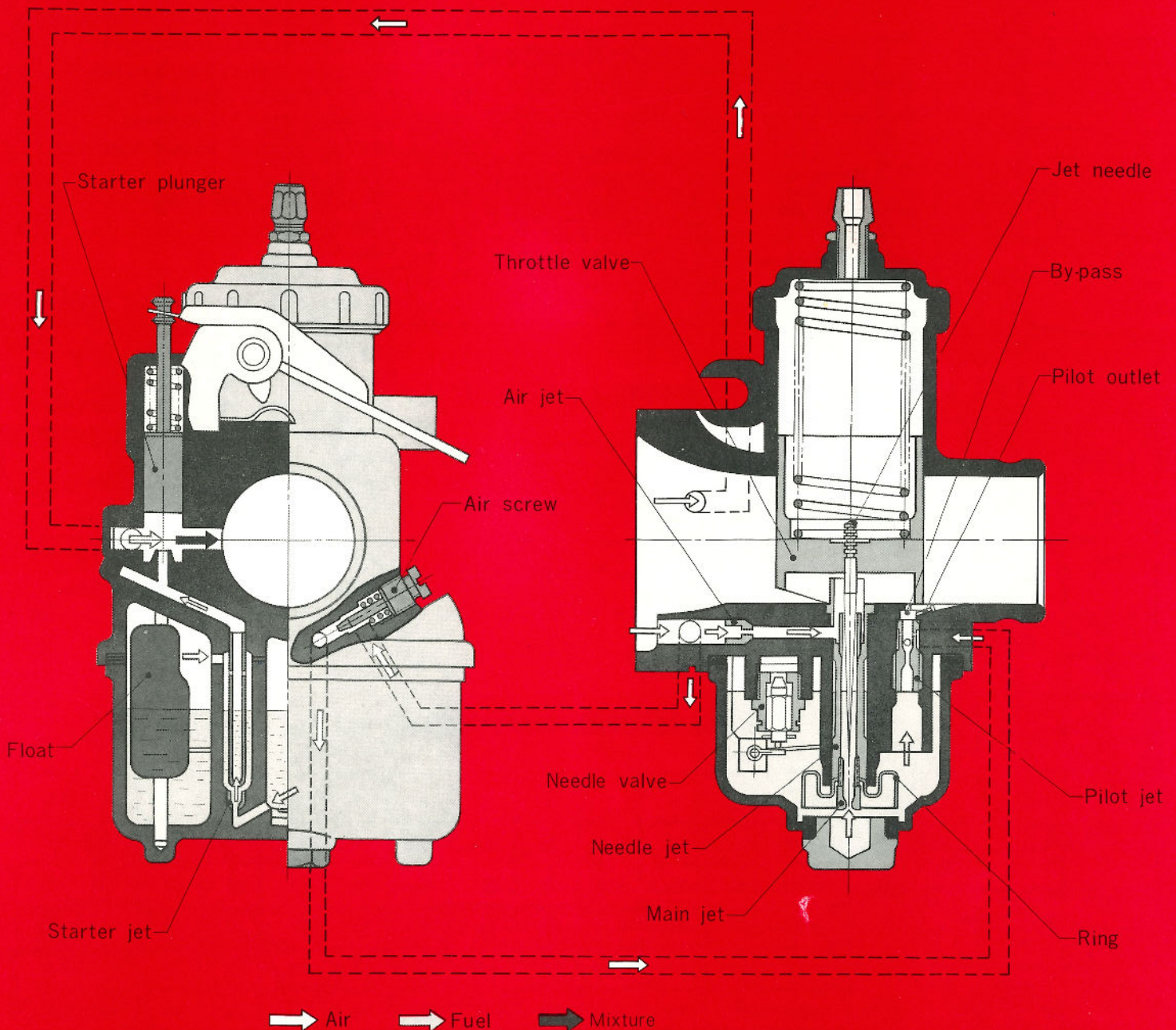
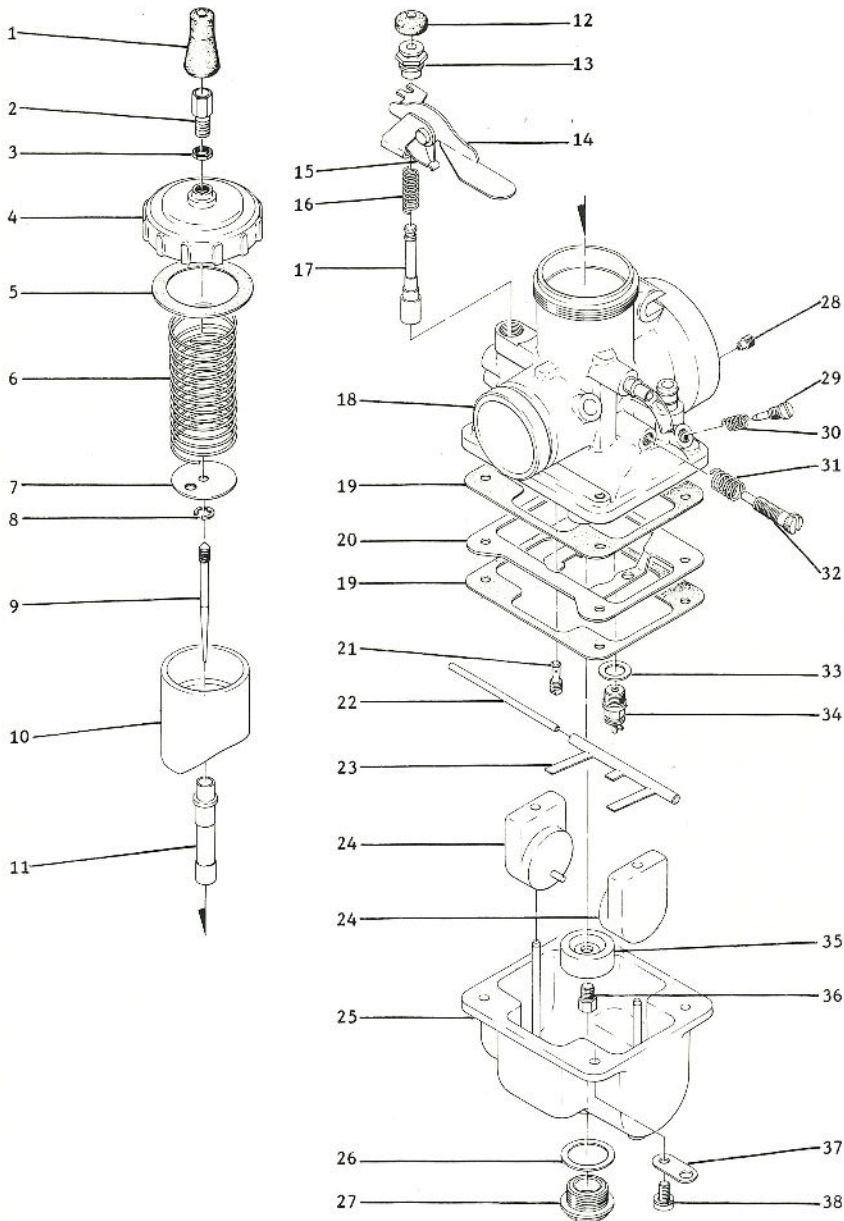


MIKUNI CARBURETORS

VM TYPE

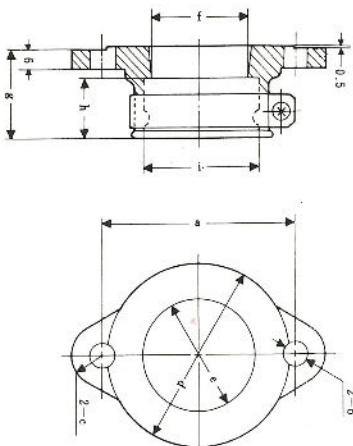


EXPLODED VIEW



1. Rubber Cap, Throttle Cable
2. Cable Adjuster
3. Locknut, Cable Adjuster
4. Top, Mixing Chamber
5. Gasket, Mixing Chamber Top
6. Spring, Throttle Valve
7. Plate, Needle Retainer
8. "E" Ring
9. Needle
10. Throttle Valve
11. Needle Jet
12. Rubber Cap, Starting System
13. Fitting, Starter System Plunger
14. Lever Assy, Starting System
15. Leaf Spring, Lever Positioning
16. Spring, Starter Plunger
17. Plunger, Starting System
18. Body, Mixing Chamber
19. Gasket, Float Chamber
20. Baffle Plate, Float Chamber
21. Pilot Jet
22. Pin, Float Arm Hinge
23. Float Arm
24. Float
25. Float Chamber
26. Gasket, Float Chamber Plug
27. Plug, Float Chamber
28. Air Correction Jet
29. Screw, Air Adjusting
30. Spring, Air Adjusting Screw
31. Spring, Idle Adjusting Screw
32. Screw, Idle Adjusting
33. Gasket, Needle & Seat Assy
34. Needle & Seat Assy
35. Cup, Fuel Retaining
36. Main Jet
37. Plate, Vent Tube Retaining
38. Screw, Float Chamber

RUBBER FLANGE DIMENSIONS (Millimeters)



Model	a	b	c	d	e	f	g	h	i	Remarks
VM28--200	60	8.5	10	60	31	29.5	27.5	17.5	35	VM26•28
VM30--200	57.2	8.5	10	58	31	30	23	15	37	VM26•28
VM32--200	74.6	8.5	10	60	35	34	32	18	40	VM30~34
VM34--200	60	8.5	10	60	37	35.5	25.0	15	40	VM30~34
VM36--200	70	8.5	10	60	39.5	38.5	25.0	15	43	VM36•38
VM38--200	74.6	8.5	10	60	38	38	28	15	43	VM36•38
VM40--200	74.6	8.5	10	68	47	46	32	15	52	VM40•44
VM44--200	84	8.5	10.5	67	47	46	25.5	15	52	VM40•44

PARTS LIST

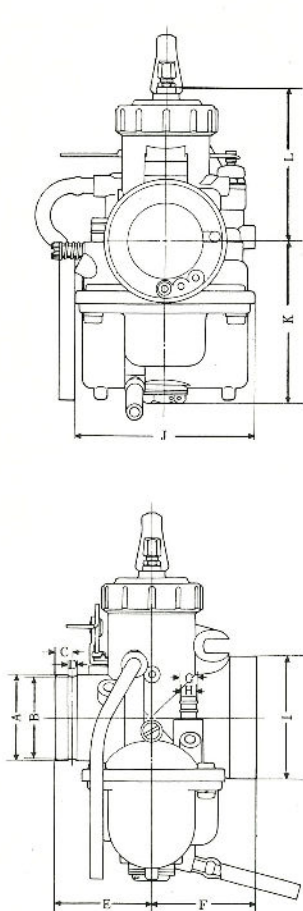
	VM28-49	VM30-44	VM32-33	VM34-20	VM36-4	VM38-3	VM40-1	VM44-1
1.	VM26/46	VM26/46	VM26/46	VM26/46	VM26/46	VM26/46	VM26/46	VM26/46
2.	M21/14	M21/14	M21/14	M21/14	M21/14	M21/14	M21/14	M21/14
3.	B30/247	B30/247	B30/247	B30/247	B30/247	B30/247	B30/247	B30/247
4.	VM26/56	VM34/27	VM34/27	VM34/27	VM36/09	VM36/09	VM44/05	VM44/05
5.	-----	-----	-----	-----	-----	-----	-----	-----
6.	VM28/58	VM34/50	VM34/50	VM34/55	VM34/55	VM34/55	VM44/13	VM44/13
7.	VM28/132	VM34/31	VM34/31	VM34/31	VM35/09	VM35/09	VM44/09	VM44/09
8.	M19/10	VM20/369	VM20/369	VM20/369	VM20/369	VM20/369	BS32/126	BS32/126
9.	J8-5F03	J8-6F5	J8-6DP5	J8-6DH3	J8-6FJ6	J8-6DP1	J8-7F6	J8-7F6
10.	VM28/56	VM28/156	VM28/156	VM28/156	VM36/13	VM38/02	VM40/02	VM40/02
11.	VM30/38	VM34/05	VM34/05	VM34/05	VM34/05	VM34/17	VM44/10	VM44/10
12.	VM28/455	VM20/455	VM20/455	VM20/455	VM20/455	VM20/455	VM20/455	VM20/455
13.	MD16/30	VM20/456	VM20/456	VM20/456	VM20/456	VM20/456	VM20/456	VM20/456
14.	VM28/51	VM28/124	VM28/124	VM28/124	VM28/124	VM28/124	VM28/124	VM28/124
15.	VM26/09	VM32/17	VM32/17	VM32/17	VM32/17	VM32/17	VM32/17	VM32/17
16.	VM16/42	VM16/42	VM16/42	VM16/42	VM16/52	VM16/42	VM16/42	VM16/42
17.	VM26/115	VM18/144	VM18/144	VM18/144	VM18/144	VM18/144	VM18/144	VM18/144
18.	VM28SC	VM30SC	VM32SC	VM34SC	VM36SC	VM38SC	VM40SC	VM44SC
19.	VM28/129	VM34/71	VM34/71	VM36/21	VM36/21	VM36/21	VM36/21	VM36/21

	VM28-49	VM30-44	VM32-33	VM34-20	VM36-4	VM38-3	VM40-1	VM44-1
20.	VM28/227	VM34/72	VM34/72	VM34/72	VM36/16	VM36/16	VM44/12	VM44/12
21.	VM22/210	VM22/210	VM22/210	VM22/210	VM22/210	VM22/210	VM22/210	VM22/210
22.	BV26/22	BV26/22	BV26/22	BV26/22	BV26/22	BV26/22	BV26/22	BV26/22
23.	VM28/166	VM34/73	VM34/73	VM34/73	VM36/15	VM36/15	VM36/15	VM36/15
24.	VM28/164	VM34/61	VM34/61	VM34/61	VM24/236	VM24/236	VM24/236	VM24/236
25.	VM28/130	VM34/68	VM34/68	VM34/68	VM36/07	VM36/07	VM44/04	VM44/04
26.	VM28/134	4/053	4/053	4/053	4/053	4/053	VM24/134	VM24/134
27.	VM28/35	VM34/42	VM34/42	VM34/42	VM36/14	VM38/08	VM28/133	VM28/133
28.	BS30/97	BS30/97	BS30/97	BS30/97	BS30/97	BS30/97	BS30/97	BS30/97
29.	VM20/214	VM20/214	VM20/214	VM20/214	VM20/214	VM20/214	VM20/214	VM20/214
30.	M12F/46	M12F/46	M12F/46	M12F/46	M12F/46	M12F/46	M12F/46	M12F/46
31.	M20/11	M20/11	M20/11	M20/11	M20/11	M20/11	M20/11	M20/11
32.	VM24/224	VM28/142	VM24/224	VM24/224	VM24/224	VM22/171	VM24/224	VM24/224
33.	VM26/25	B34/52	B34/52	B34/52	B34/52	B34/52	B34/52	B34/52
34.	VM26/26	VM34/39	VM34/39	VM34/39	VM34/39	VM34/39	VM28/163	VM28/163
35.	VM28/228	VM36/17	VM36/17	VM36/17	VM36/17	VM38/09	VM28/228	VM28/228
36.	4/042	4/042	4/042	4/042	4/042	4/042	4/042	4/042
37.	VM15/164	VM28/79	VM28/79	VM28/79	VM28/79	VM28/79	VM28/79	VM28/79
38.	CW2-0416	CW2-0518	CW2-0518	CW2-0518	CW2-0518	CW2-0518	CW2-0518	CW2-0518

SPECIFICATIONS

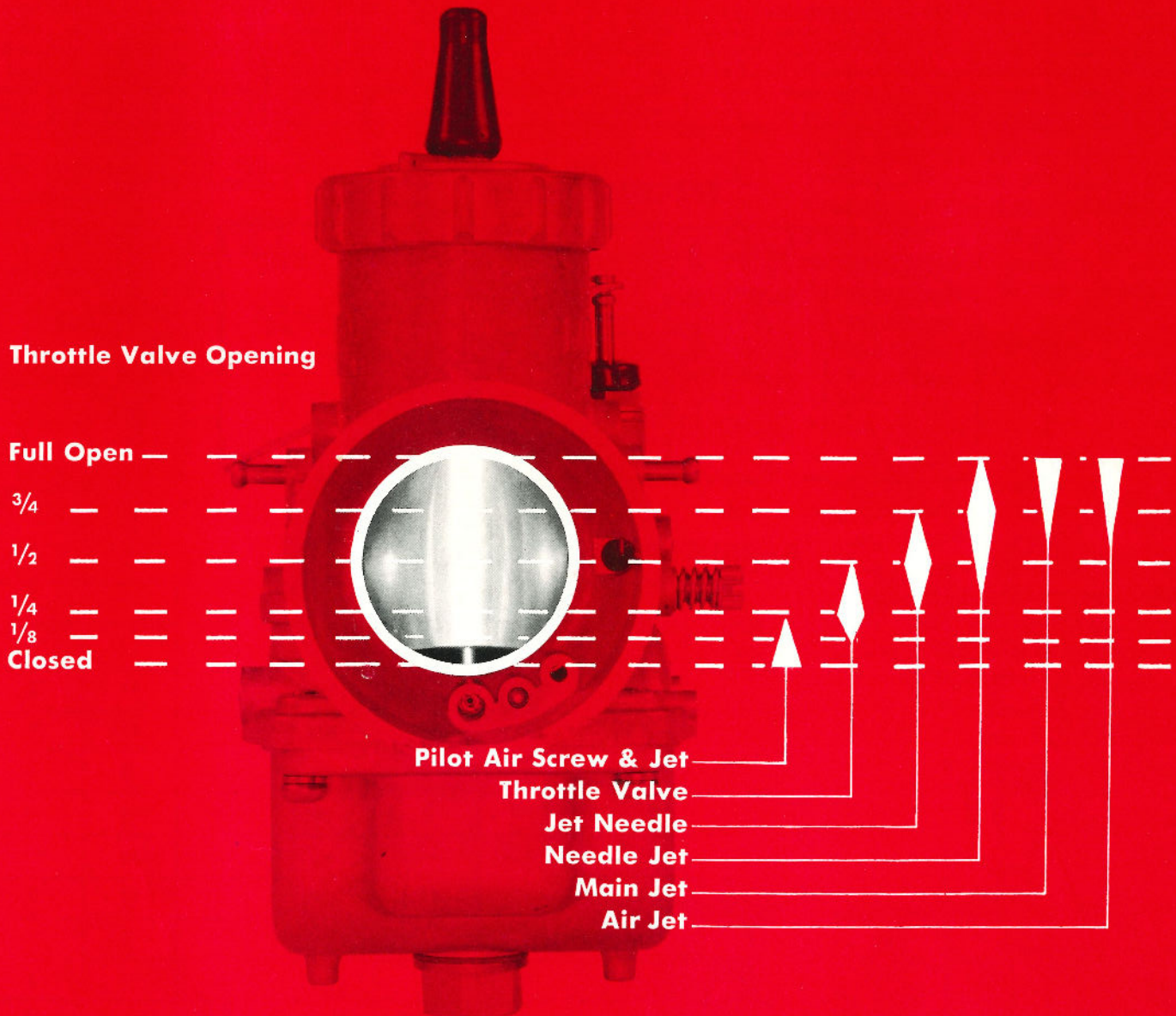
	M. J.	A. J.	J. N.	N. J.	T. V.	P. J.
VM28-49	200	0.5	5F3-3	N-8	2.5	60
VM30-44	250	2.0	6F5-4	P-5	2.5	60
VM32-33	200	2.0	6DP1-3	Q-6	3.0	35
VM34-20	270	2.0	6DH3-4	P-0	2.5	50
VM36-4	310	2.0	6FJ6-3	Q-5	1.5	35
VM38-3	360	1.0	6DP1-3	P-6	2.5	50
VM40-1	310	0.5	7F6-3	BB-0	1.5	35
VM44-1	310	0.5	7F6-3	BB-0	1.5	35

CARBURETOR DIMENSIONS



Model		VM28--49	VM30--44	VM32--33	VM34--20	VM36--4	VM38--3	VM44--1
Dimension (mm)	A	35	40	40	40	43	43	52
	B	33	38	38	41	41	41	50
	C	10	8	8	8	8	8	8
	D	4	4	4	4	4	4	4
	E	49	44.5	44.2	44.5	49	49	49
	F	44	48	57.8	48	67	67	67
	G	7	9	7	9	9	9	9
	H	6	8	6	8	8	8	8
	I	44	57.5	57.5	57.5	62	62	70
	J	72	83.4	83.4	83.4	79.4	79.4	79
K	66	69.7	75	69.7	79	81	93	
L	54	67	67	67	73	73	99.5	
Position of Throttle adjuster and Air screw	Throttle adjuster	Left	Left	Left	Left	Left	Right	Left
	Air screw	Right	Right	Right	Right	Right	Right	Right
Weight (gr)		550	800	770	750	850	830	1020
Material		A1	A1	A1	A1	A1	A1	A1

Functional Range Effectiveness of Tuning Parts in relation to the Throttle Valve Opening (Approximation)



MIC **MIKUNI AMERICAN CORPORATION**
VAN NUYS, CALIFORNIA 91406